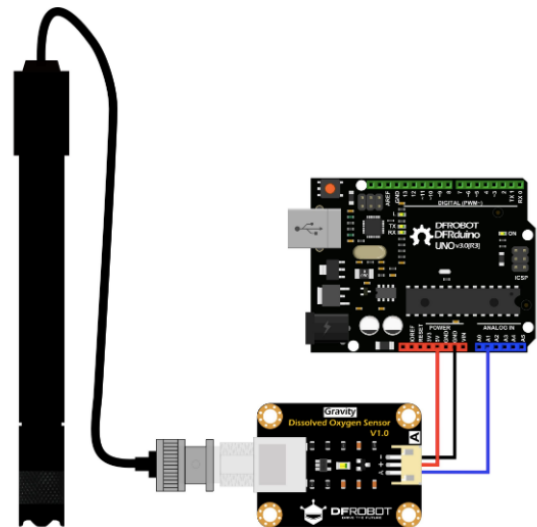


## DISSOLVED OXYGEN SENSOR

This is a dissolved oxygen sensor kit, which is compatible with Arduino microcontrollers. This product is used to measure the dissolved oxygen in water, to reflect the water quality. It is widely applied in many water quality applications, such as aquaculture, environment monitoring, natural science and so on.



Arduino Dissolved Oxygen (DO) Sensor Connection Diagram

### SPECIFICATION

#### Dissolved Oxygen Probe

- Type: Galvanic Probe
- Detection Range: 0~20mg/L
- Response Time: Up to 98% full response, within 90 seconds (25°C)
- Pressure Range: 0~50PSI
- Electrode Service Life: 1 year (normal use)
- Maintenance Period: Membrane Cap Replacement Period: 1~2 months (in muddy water); 4~5 months (in clean water) Filling Solution Replacement Period: Once every month
- Cable Length: 2 meters
- Probe Connector: BNC

#### Signal Converter Board

- Operating Voltage: 3.3~5.5V
- Output Signal: 0~3.0V
- Cable Connector: BNC
- Signal Connector: Gravity Analog Interface (PH2.0-3P) Dimension: 42mm \* 32mm

## LoRaWAN IO CONTROLLER

The LT series I/O Modules are Long Range LoRa I/O Controller. It contains different I/O Interfaces such as: analog current Input, analog voltage input, relay output, digital input and digital output etc. The LT I/O Modules are designed to simplify the installation of I/O monitoring. The LT I/O Controllers allows the user to send data and reach extremely long ranges. It provides ultra-long range spread spectrum communication and high interference immunity whilst minimising current consumption.

### **SPECIFICATIONS :**

- STM32L072CZT6 MCU
- SX1276/78 LoRa Wireless Chip
- LoRaWAN Class A & Class C protocol
- Optional Customized LoRa Protocol
- Bands: CN470/EU433/KR920/US915
- EU868/AS923/AU915
- AT Commands to change parameters

